



Facilities planning and design for the ageing population

Dr Evangelia Chrysikou

Lecturer, Program Leader MSc Healthcare Facilities

The Bartlett Real Estate Institute, University College London UK,

D4 Action Group Co-ordinator, EIP on AHA, European Commission

&

Owner, SynThesis Architects



Dr Evangelia Chrysikou



Dr Evangelia Chrysikou



The Bartlett - Real Estate Institute



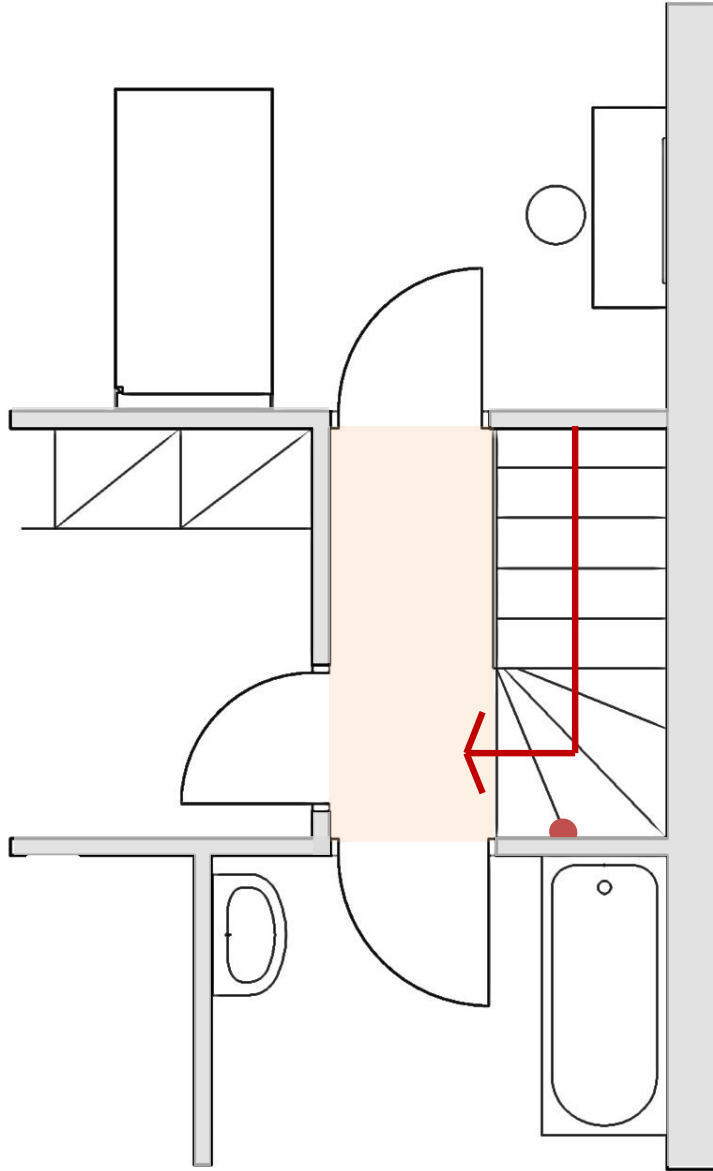


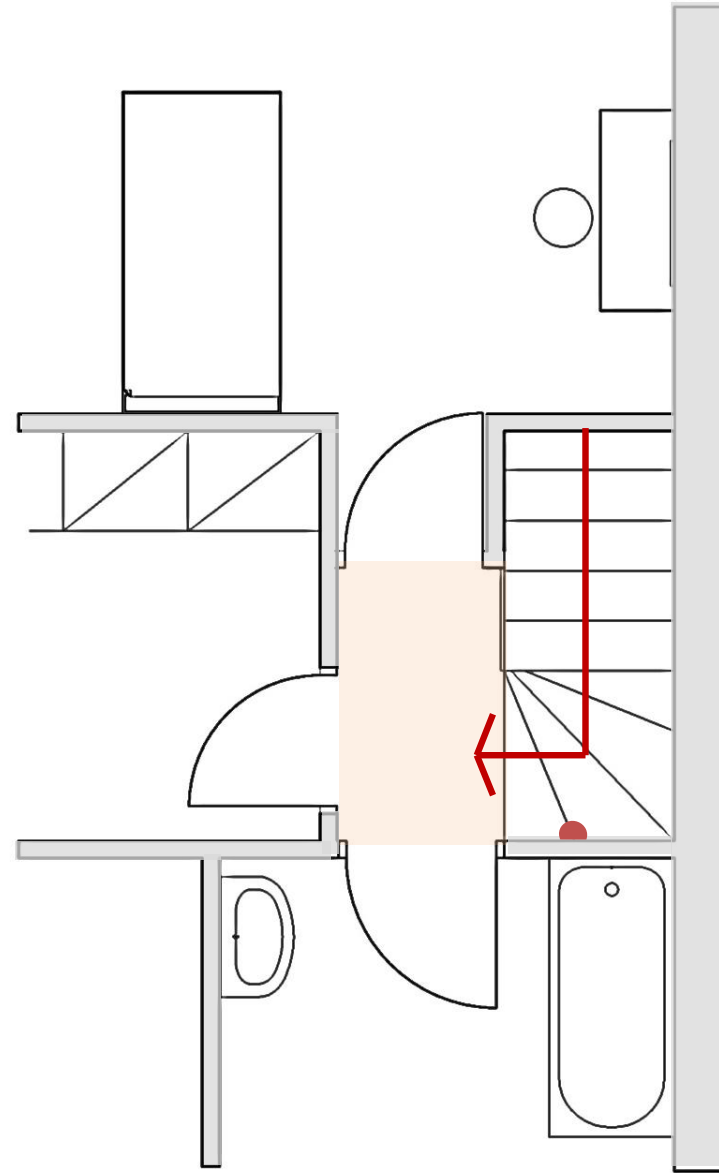
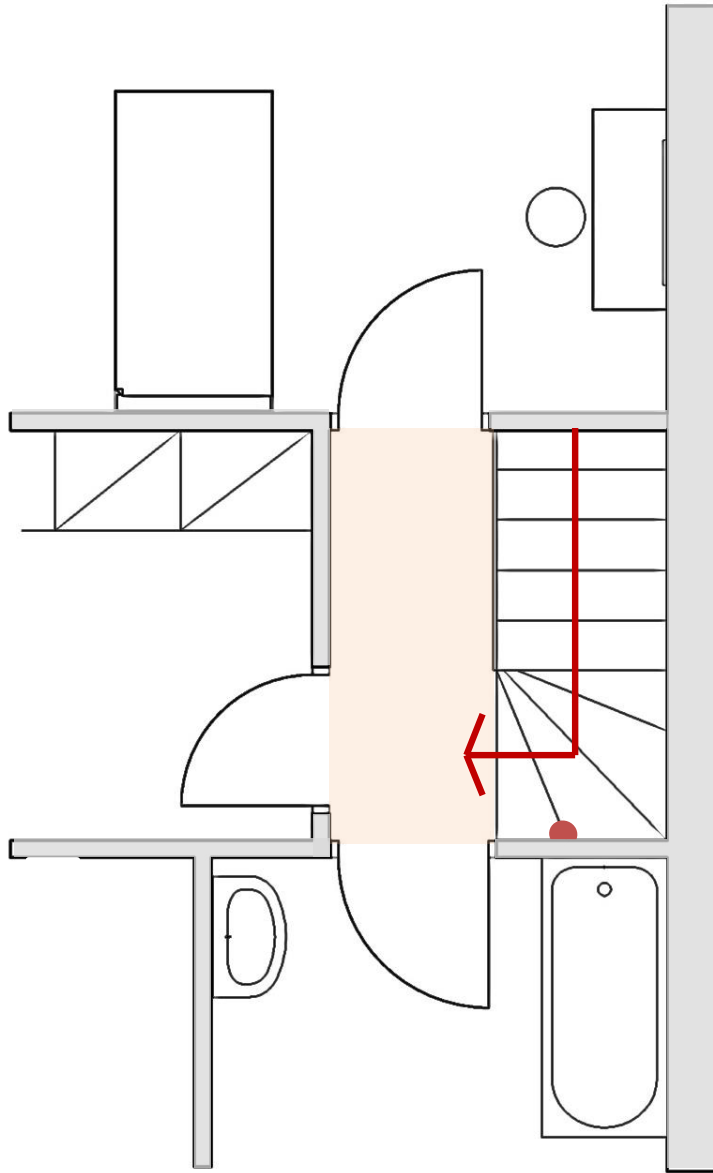
Dr Evangelia Chryssikou

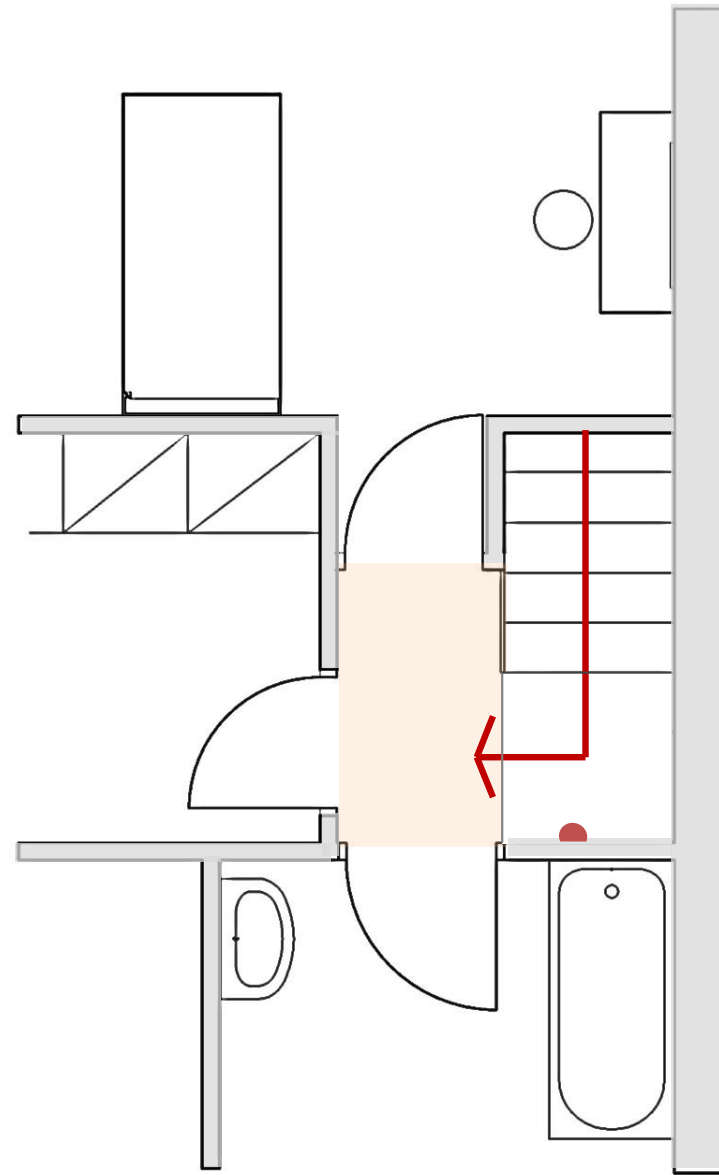
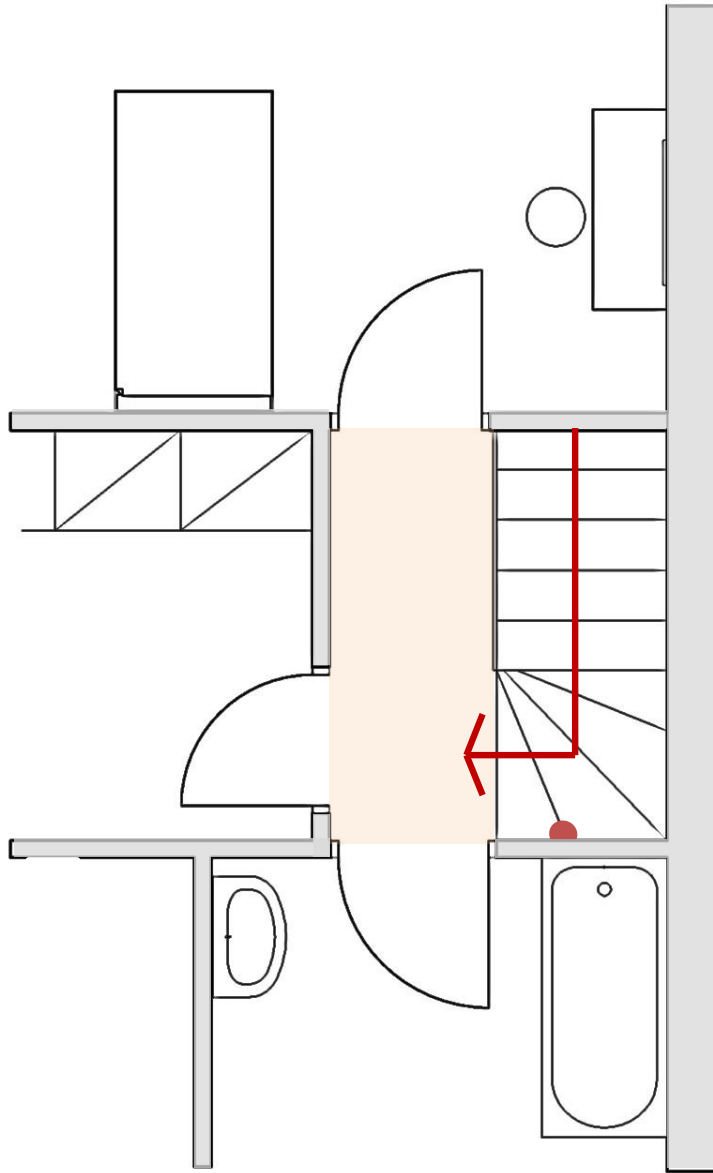


The Bartlett - Real Estate Institute











Hogewey Village, Netherlands



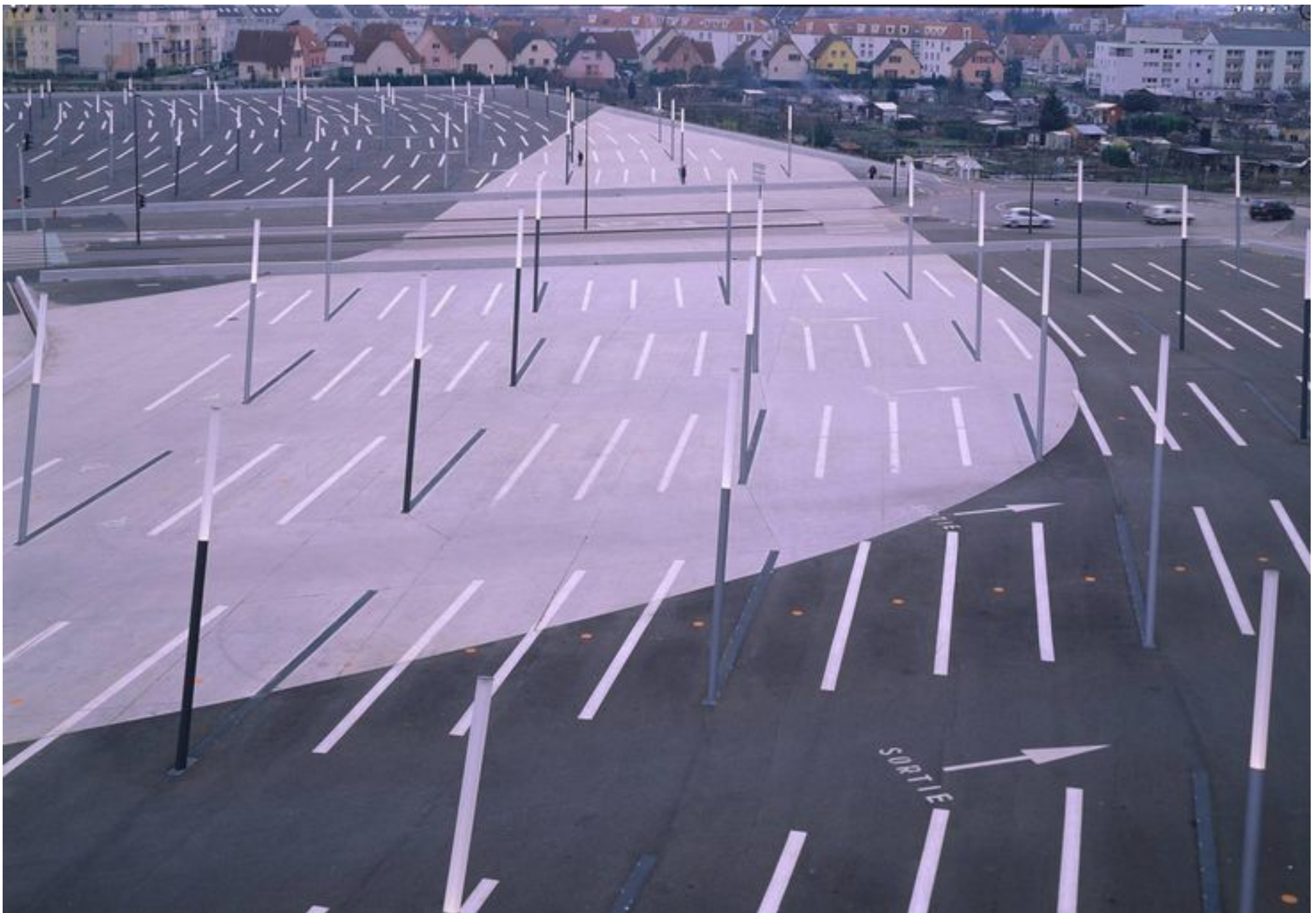


Dr Evangelia Chryssikou



The Bartlett - Real Estate Institute





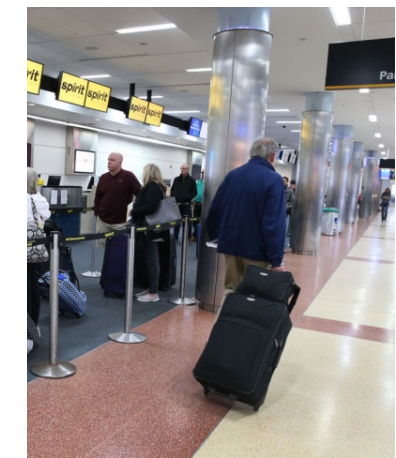
Dr Evangelia Chrysikou



The Bartlett - Real Estate Institute

SynThesis







ELSEVIER

Contents lists available at ScienceDirect

Applied Ergonomics

Journal homepage: www.elsevier.com/locate/apergo



Review article

Flying solo: A review of the literature on wayfinding for older adults experiencing visual or cognitive decline

Sheila J. Bosch ^{a,*}, Arsalan Charaveis ^b

^a University of Florida, Department of Interior Design, College of Design, Construction and Planning, 348 ARC1, PO Box 115705, Gainesville, FL, 32611, USA
^b Texas A&M University, Langford Architecture Building, 3137 TAMU, College Station, TX, 77843-3137, USA

ARTICLE INFO

Article history:
Received 2 June 2015
Received in revised form
16 July 2016
Accepted 18 July 2016
Available online 1 August 2016

Keywords:
Wayfinding
Airport design
Older adults

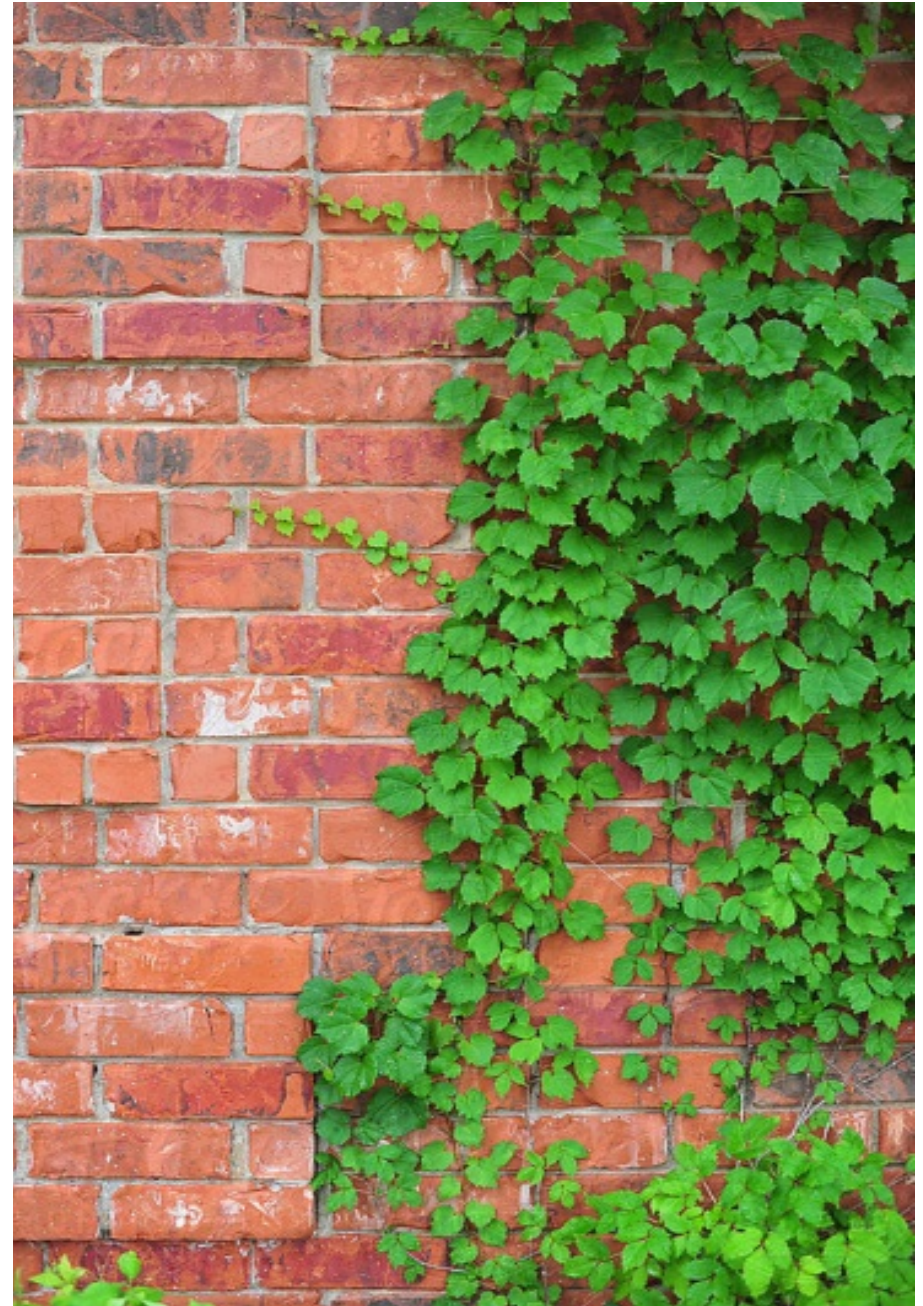
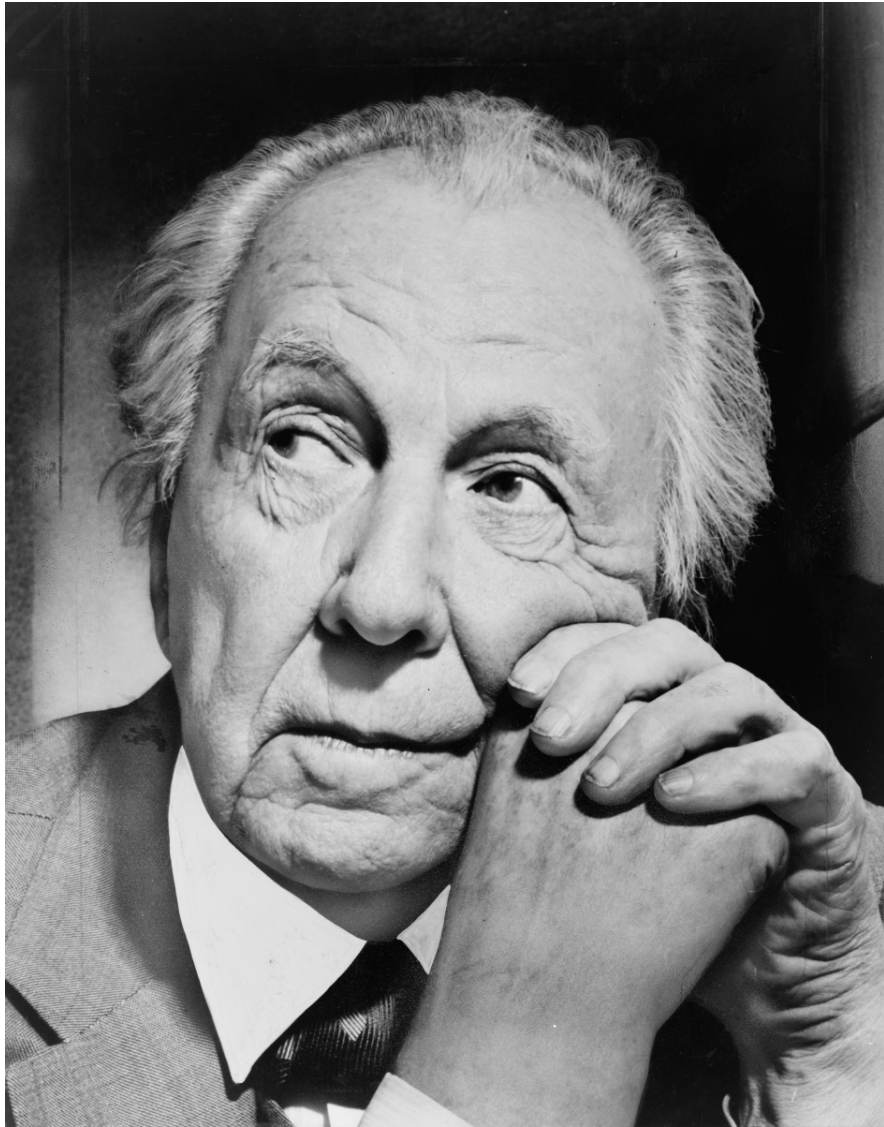
Although technology is becoming increasingly important, more traditional approaches to wayfinding, such as designing facilities with an intuitive building layout, are still heavily relied upon in the aviation industry. With any new airport construction or renovation project, the needs of older persons with disabling conditions must be considered, and the design team should include at least one person who is familiar with designing for their needs. Capital construction projects provide rich opportunities to design an airport so that it is easy to navigate and is highly accessible to older travelers, supporting their independence. Of course, there are many ways to improve wayfinding, even when construction is not planned. From updating signage to the incorporation of new technologies, there are many opportunities to create traveler-centered environments. With the growth of accessible tourism, those who operate airports and airlines increasingly recognize that improving the travel experience for older adults may improve not only their image, but also their bottom line.

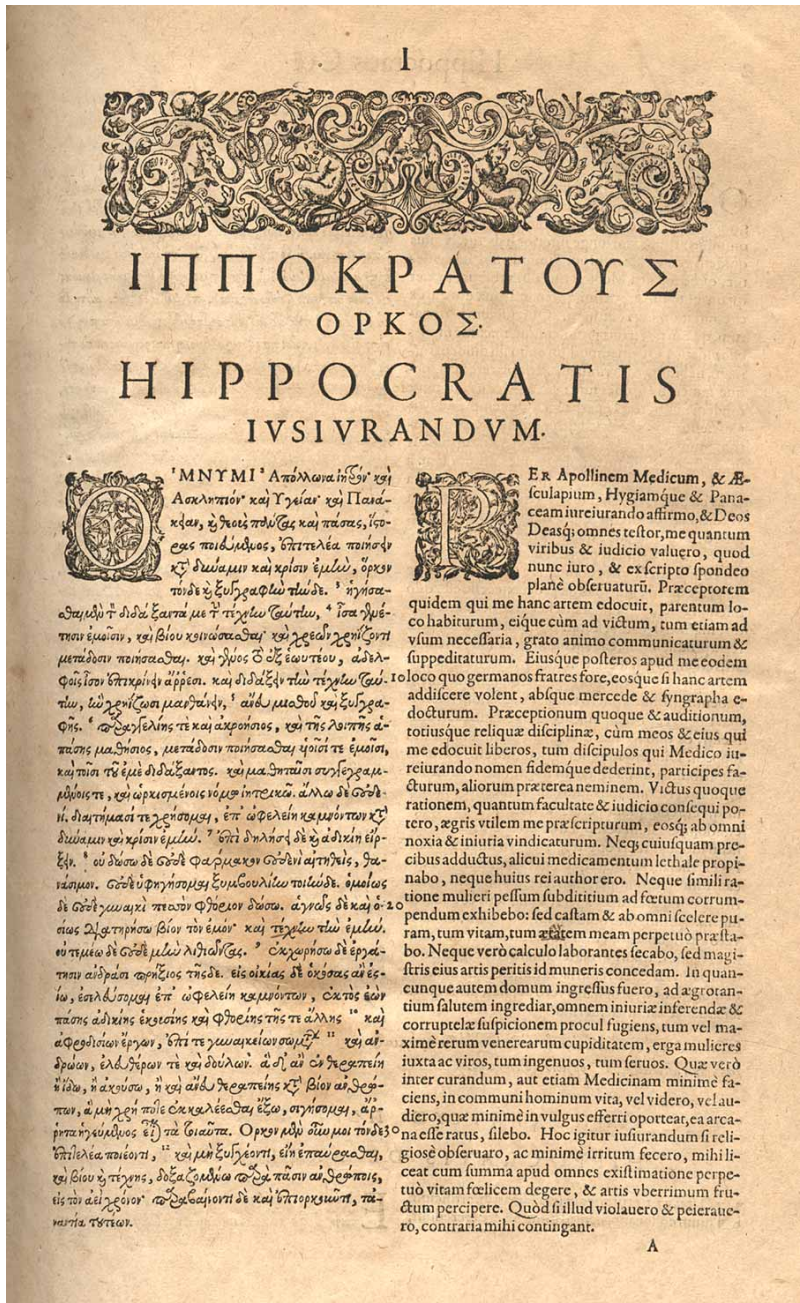
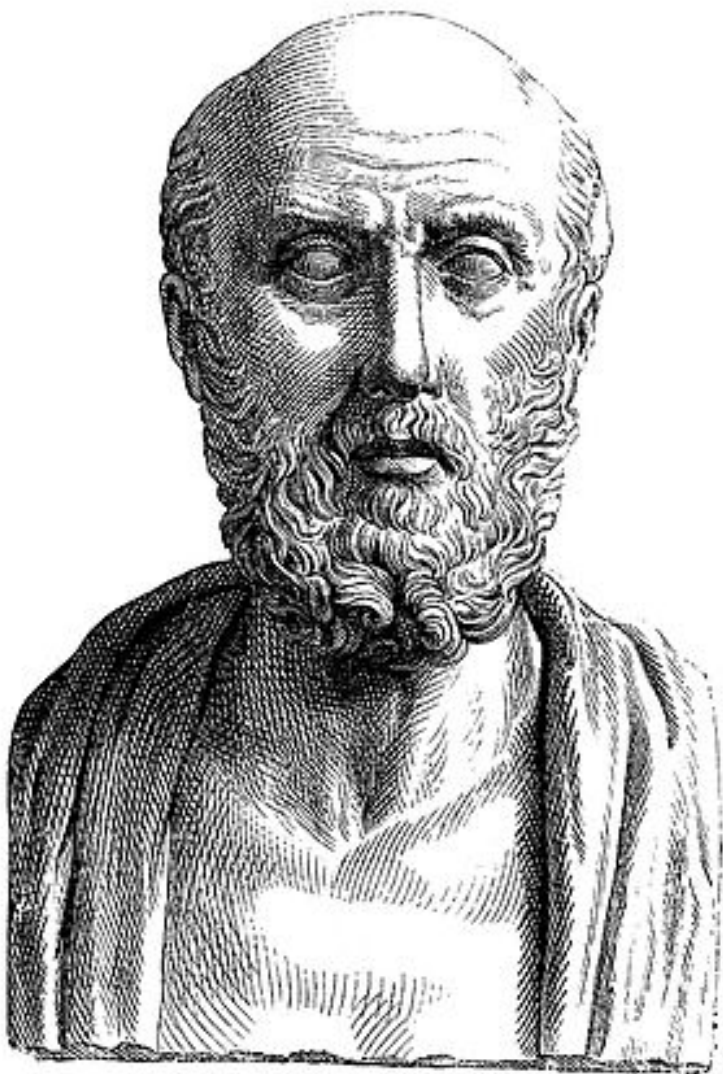


Health Technologies:

“application(s) of **organized knowledge and skills** in the form of **devices, medicines, vaccines, procedures and systems developed to solve a health problem and improve quality of lives**”







THE BARTLETT
REAL ESTATE INSTITUTE



Introducing the BREI



Dr Evangelia Chrysi Kou



The Bartlett - Real Estate Institute



Thank you!

Dr. Evangelia Chrysikou – e.chrysikou@ucl.ac.uk

https://www.researchgate.net/profile/Evangelia_Chrysikou2/publications



Visit: <https://www.ucl.ac.uk/bartlett/real-estate/>



Join: Evangelia Chrysikou PhD



Like: Design for mental health



Follow: e_chrysikou



Talk: synthesis.lia